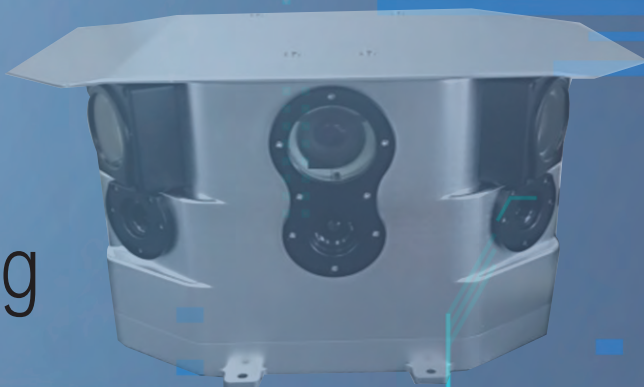


Wide View Monitoring System



■ Main Feature

- Dual type video system
 - Thermal and CMOS
- FOV 170°x45° monitoring
- Three 640x480 Pixel Thermal Imager
- Rugged and Militarized Product



ITEM	SUB	PERFORMANCE
Visible (Day)	Sensor Type FOV Spectral Band	768x485 CMOS Image x3, 170° H x45° V 0.4 um ~ 0.7 um
Thermal (Night)	Sensor Type FOV Spectral Band	640x480 VOx microbolometer x3 140° H x45° V 7.5 um ~ 13.5 um
Power	Power requirements Power consumption	12 to 32 VDC 28 W Nominal
Environment	Operating temp Storage temp	Mil -spec MIL -STD -810F -32 °C to 55 °C (-25.6 °F to 131 °F) -50 °C to 65 °C (-58 °F to 149 °F)
DIMENSIONS, WEIGHT & MOUNTING	Dimensions Weight Mounting	DIMENSIONS, WEIGHT & MOUNTING 267 x 106 x 213 mm (10.5 x 4.2 x 8.4 in) 5.7 kg (12.5 lbs)
INTERFACES	Command and Control Image display	RS-422 or Gigabit Ethernet Real time on PC or dedicated monitor
OPTIONS	Basic Unit Display Package	Video output direct to three (3) displays for high resolution 180° display Single custom display with Image Stitching

■ Applications



Military Vehicle ▲



EOD Monitoring ▲

Panorama Camera System

■ Main Feature

- 360° Surround Monitoring
- Dual video Monitoring : Thermal and CMOS
- Image Edge Blending
- Real Time Wide Panorama Monitoring
- Rugged and Militarized Product



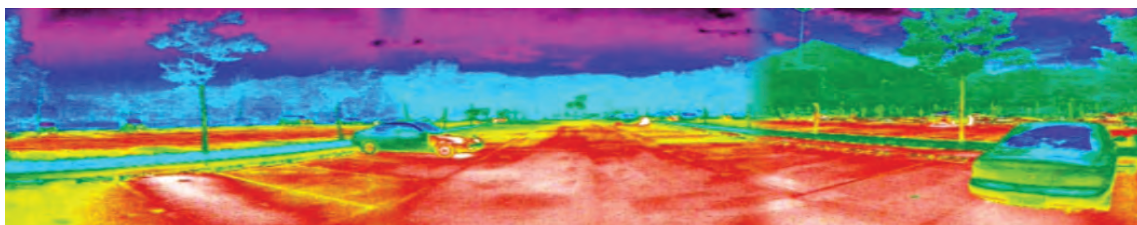
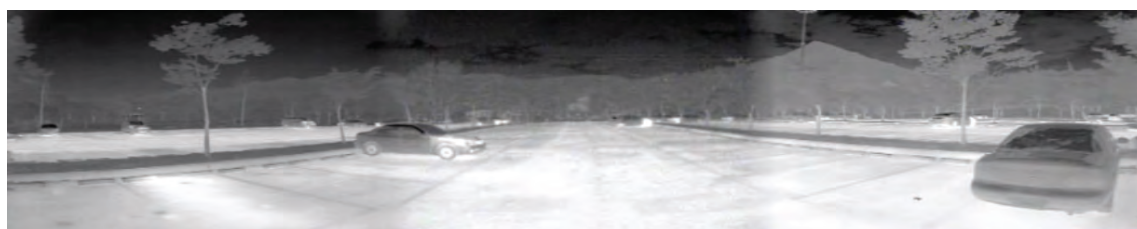
360° Panorama Camera



180° Front & 60° Rear
Panorama Camera



■ Edge Blending



Edge Blending & Image Fusion Technology