

SR-Z400

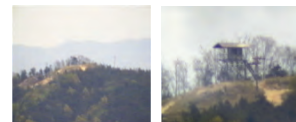
Stabilized Gimbal Auto Tracking System

Laser Range Finder

- Detection 10 km, Aircraft
- 1,570nm, Eye Safe(Class-1)
- Accuracy : $\pm 5m$

Long Range D/N Camera

- Detection 10km, Aircraft

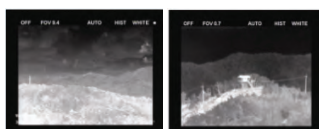


Wide

Narrow

Thermal Camera

- Detection 10km, Aircraft
- Continuous FOV/Auto Focus
- High Resolution : 640x480



Wide

Narrow

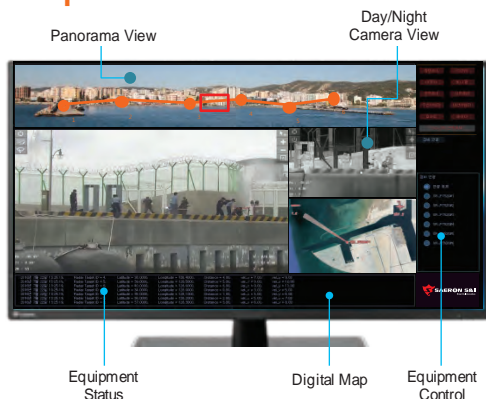
Motion Stabilization

- 2 axis Gyro Stabilizer (4 axis Gyro Stabilization Available)
- BIT (Built In Test)
- Embedded Processor
- GPS & Digital Compass(option)
- Radar Interlocking(option)
- Auto Tracking(option)

Operation

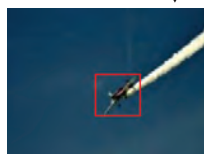
- Azimuth : 360 ° Endless, 90 ° /sec
- Elevation : -60 ° /+90 ° , 60 ° /sec
- Accuracy : 0.01 °

Operation Software

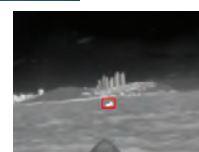


Auto Tracking/Radar Interlocking

Auto Tracking Feature for UAV and Boat ▼



Mounted on UAV ▼



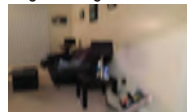
Full Motion Stabilization



Applied on Korean Unmanned Surface Vehicle

Onboard Video Processor

Digital Image Stabilizer ▼



Anti Fog ▼



On Screen Display ▼



Video Fusion ▼



SR-Z400

Stabilized Gimbal Auto Tracking System



ITEM		SR-Z400
Thermal Camera	Spectral Range	Cooled, 3 to 5 μ m
	Resolution	640 x 512
	Focal Length	19 to 275mm
	F Number	f/5.5
	Field of View	28.3° ~ 2.0°
	Optical Zoom	15x
	Digital Zoom	Continuous 5.5x
	Pixel Pitch	15 μ m
	NETD	\leq 20 mK
	Video Format	NTSC/PAL
	Frame Rate	60 Hz (30 fps)
	Focus System	One-Shot Auto / Motorized Manual
	Image Processing	Noise Reduction, Edge Enhancement, Sharpness, AGOC, AGC, AOC, AGC ROI
	Detection Range Human Target* NATO Target**	9.2 km 15.5 km
Color Camera	Recognition Range Human Target* NATO Target**	2.9 km 6 km
	Sensor Type	1/2.8 inch CMOS
	Image Resolution	1920(H) x 1080P(V), 1280 X 1024, 1280 X 960, 1280 X 720P
	Focal length	4.44 ~ 142.6mm, 32x Optical Zoom, 16x Digital Zoom
Laser Range Finder	FOV	H 62.8°(Wide) ~ 2.23°(Tele) / V 36.80°(Wide) ~ 1.26°(Tele)
	Laser wavelength	1.5 μ m, eyesafe
	Detection Range	10km for 2.3x2.3m Nato Target
	Measurement Rate	0.2, 1, 4, 10 Selectable
Laser Pointer	Accuracy	0.5 ~ 1.5m
	Laser Type	Green Laser for Designation
Controller	Controller Type	Panel Mount Controller
	Display	10.2" Touch LED
	Interface	RADAR, GPS, Ethernet, RS232/RS422
	Features	Built-In-Test, Stabilization Select Real-Time Monitoring, Network Control
Gimbal	Diameter	322 mm
	Height	449 mm
	Weight	< 28 kg (4 axis)
	Pan Range	360° continuous
	Tilt Range	-60° +90°
	Max Speed	Pan : 60°/s, Tilt : 60°/s
	Power Requirement	22-34 VDC, 500 W(max.)
	Operating Temperature	-20°C to +55°C
	Environmental Rating	MIL-STD-810G, 506.4 Rain
	Tracking	Auto Video Tracking (Option)
	Gyro	2 Axis Gyro Stabilization System (3 & 4 Axis Gyro Stabilization Available)